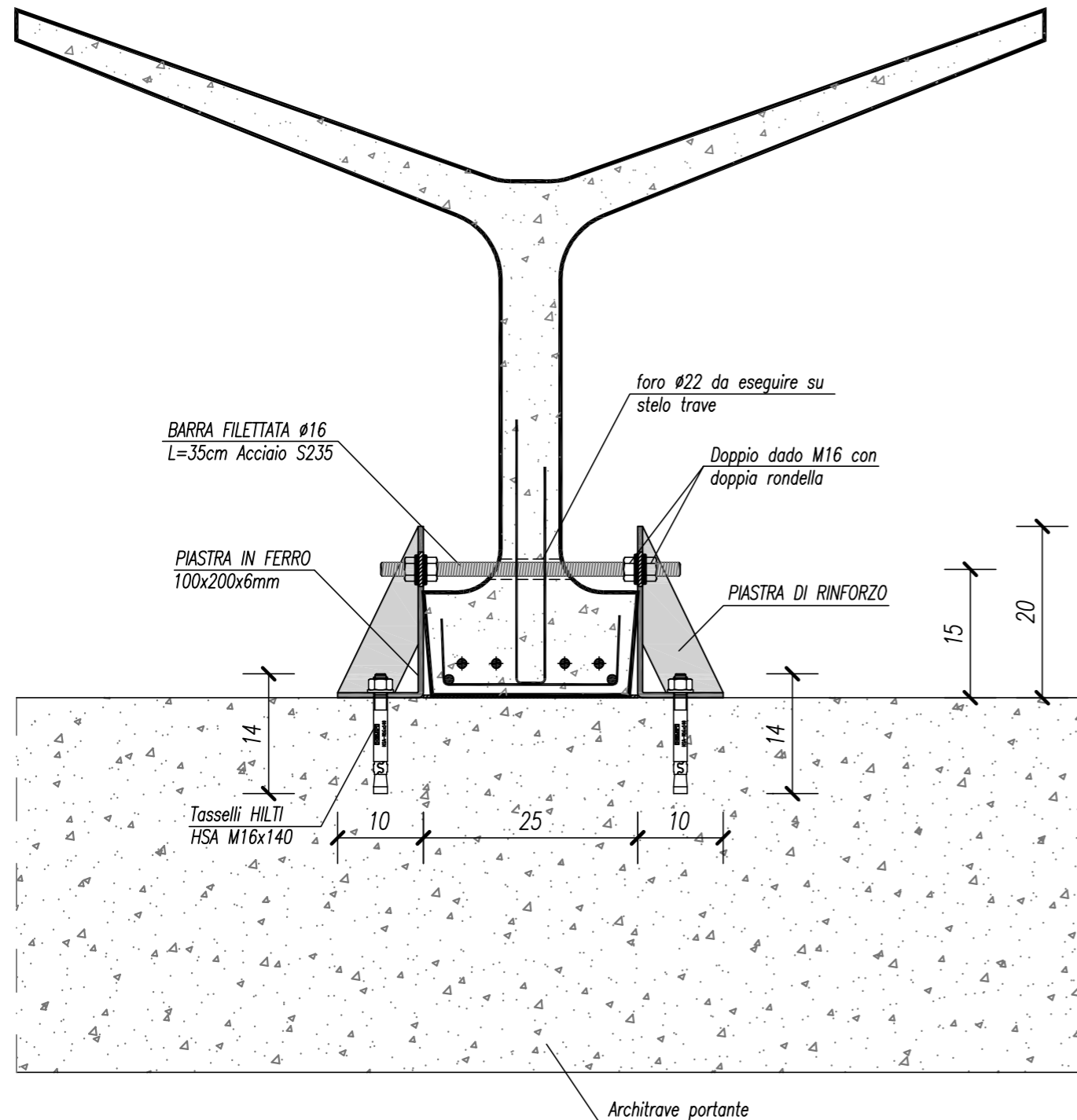
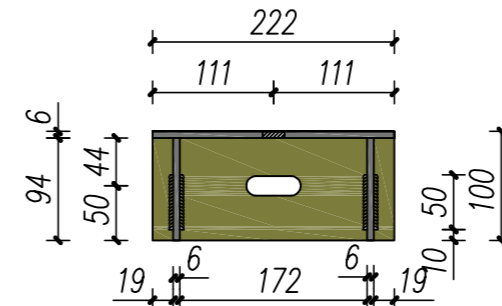


NODO FISSAGGIO TRAVE AD Y CON ARCHITRAVE PORTANTE

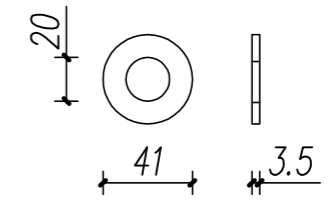


FERRAMENTA A CORREDO

piastra 222x200x6
acciaio S235



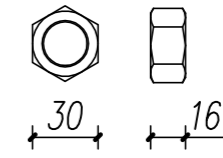
Rondelle M16



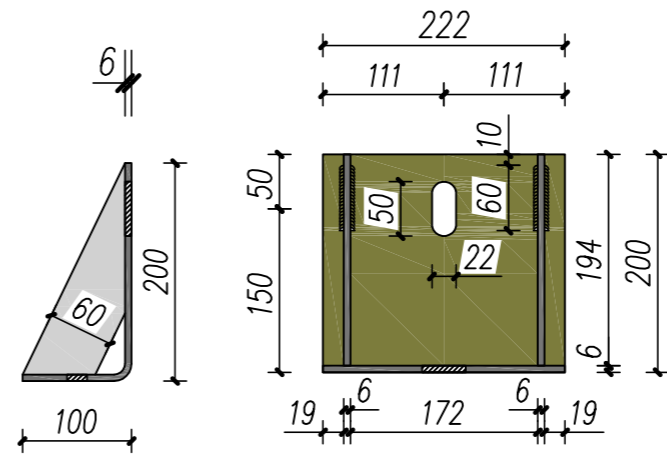
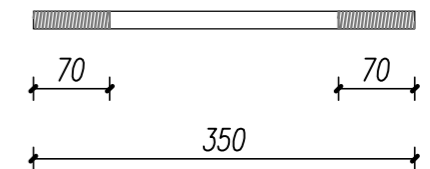
Tasselli Hilti HSA
M16x140



Dadi M16



Barre in acciaio liscio M16
S235 L= 35 cm filettate
alle estremità



misure in millimetri

MATERIALE PER NODO

- 2 Piastre ad "L"
100x200x6 l=222 mm
- 2 Tasselli Hilti HSA M16x140
- 4 Rondelle M16
- 4 Dadi M16
- 1 Barra in acciaio liscio M16
s235 L= 35 cm

SALDATURE

I cordoni di saldatura non dimensionati dovranno avere la dimensione di gola pari a 5/10 dello spessore minimo da saldare

